

MX-3 Forged Fluid End Simplex Plunger Pump

SPECIFICATIONS:

Max. Plunger Size, in. (mm):
1.625 (41.3)

Stroke Length, in. (mm):
2.250 (57.2)

Rated BHP at 400 rpm (kW):
5.0 (3.7)

Rated plunger load, pounds (N):
2,000 (8,896)

Maximum discharge working pressure, psi (kPa):

- "M" model: 2,012 (13,872)
- "H" model: 5,000 (34,474)

Crankshaft extension, in.(mm):

Diameter: 1.875 (47.6)
Length: 2.875 (73.0)
Key (width x depth): 1/2 X 1/2 (12.7 X 12.7)

Oil Capacity, gallons (L):
Crankcase: 0.5 (1.7)

Weight, pump w/ wood skids pounds (Kg):

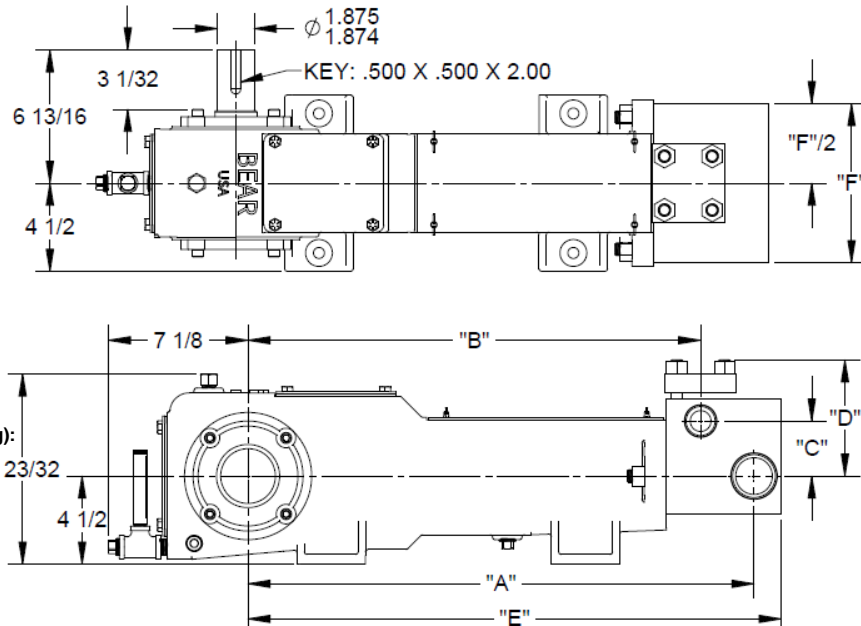
- "M": 188 (88.3)
- "H": 170 (77.1)

Standard Materials Fluid End:

- Carbon Steel
- Stainless Steel

Crankshaft Options:

- Right Hand Drive
- Left Hand Drive
- Right Hand Drive w/ Aux
- Left Hand Drive w/ Aux



Pump Model	Fluid End Connections		Dimensions in inches (mm)					
	Discharge Connection	Suction Connection	A	B	C	D	E	F
MX-3M	1-1/4" NPT	2" NPT	25-27/32 (656)	23-1/8 (587)	2-13/16 (71)	5-15/16 (151)	27-1/4 (692)	8-1/8 (206)
MX-3H	3/4" NPT	1-1/2" NPT	25 (635)	22-7/8 (581)	2-5/32 (55)	4-29/32 (125)	26-1/4 (667)	8-1/8 (206)

MX-3 Forged Fluid End Simplex Plunger Pump

Performance Data:

Pump	English Units					100 RPM		200 RPM		250 RPM		300 RPM		350 RPM		400 RPM	
	Plunger Dia. In.	Plunger Area Sq. In.	BPD per RPM	GPM per RPM	Max Press. PSI	BPD	GPM	BPD	GPM	BPD	GPM	BPD	GPM	BPD	GPM	BPD	GPM
MX-3M (1-1/2")	1.625	2.0739	0.6926	0.0202	964	69.3	2.02	138.5	4.04	173.1	5.05	207.8	6.06	242.4	7.07	277.0	8.08
	1.500	1.7671	0.5901	0.0172	1,132	59.0	1.72	118.0	3.44	147.5	4.30	177.0	5.16	206.5	6.02	236.1	6.88
	1.375	1.4849	0.4959	0.0145	1,347	49.6	1.45	99.2	2.89	124.0	3.62	148.8	4.34	173.6	5.06	198.4	5.79
	1.250	1.2272	0.4098	0.0120	1,630	41.0	1.20	82.0	2.39	102.5	2.99	122.9	3.59	143.4	4.18	163.9	4.78
	1.125	0.9940	0.3320	0.0097	2,012	33.2	0.97	66.4	1.94	83.0	2.42	99.6	2.90	116.2	3.39	132.8	3.87
MX-3H (1")	1.000	0.7854	0.2623	0.0076	2,546	26.2	0.76	52.5	1.53	65.6	1.91	78.7	2.29	91.8	2.68	104.9	3.06
	0.875	0.6013	0.2008	0.0059	3,326	20.1	0.59	40.2	1.17	50.2	1.46	60.2	1.76	70.3	2.05	80.3	2.34
	0.750	0.4418	0.1475	0.0043	4,527	14.8	0.43	29.5	0.86	36.9	1.08	44.3	1.29	51.6	1.51	59.0	1.72
	0.625	0.3068	0.1025	0.0030	5,000	10.2	0.30	20.5	0.60	25.6	0.75	30.7	0.90	35.9	1.05	41.0	1.20
	0.500	0.1963	0.0656	0.0019	5,000	6.6	0.19	13.1	0.38	16.4	0.48	19.7	0.57	22.9	0.67	26.2	0.76
Brake Horsepower Required						1.3		2.5		3.2		3.8		4.4		5.0	

Pump	Metric Units					100 RPM		200 RPM		250 RPM		300 RPM		350 RPM		400 RPM	
	Plunger Dia. cm	Plunger Area cm ²	M ³ /Hr per RPM	L/Sec. Per RPM	Max Press. kPa	M ³ /Hr.	L/Sec.	M ³ /Hr.	L/Sec.	M ³ /Hr.	L/Sec.	M ³ /Hr.	L/Sec.	M ³ /Hr.	L/Sec.	M ³ /Hr.	L/Sec.
MX-3M (1-1/2")	41	13.380	0.0046	0.0013	6,649	0.46	0.13	0.91	0.25	1.14	0.32	1.37	0.38	1.60	0.45	1.83	0.51
	38	11.401	0.0039	0.0011	7,803	0.39	0.11	0.78	0.22	0.97	0.27	1.17	0.33	1.36	0.38	1.56	0.43
	35	9.580	0.0033	0.0009	9,287	0.33	0.09	0.65	0.18	0.82	0.23	0.98	0.27	1.15	0.32	1.31	0.36
	32	7.917	0.0027	0.0008	11,237	0.27	0.08	0.54	0.15	0.68	0.19	0.81	0.23	0.95	0.26	1.08	0.30
	29	6.413	0.0022	0.0006	13,872	0.22	0.06	0.44	0.12	0.55	0.15	0.66	0.18	0.77	0.21	0.88	0.24
MX-3H (1")	25	5.067	0.0017	0.0005	17,557	0.17	0.05	0.35	0.10	0.43	0.12	0.52	0.14	0.61	0.17	0.69	0.19
	22	3.879	0.0013	0.0004	22,932	0.13	0.04	0.27	0.07	0.33	0.09	0.40	0.11	0.46	0.13	0.53	0.15
	19	2.850	0.0010	0.0003	31,213	0.10	0.03	0.19	0.05	0.24	0.07	0.29	0.08	0.34	0.10	0.39	0.11
	16	1.979	0.0007	0.0002	34,474	0.07	0.02	0.14	0.04	0.17	0.05	0.20	0.06	0.24	0.07	0.27	0.08
	13	1.267	0.0004	0.0001	34,474	0.04	0.01	0.09	0.02	0.11	0.03	0.13	0.04	0.15	0.04	0.17	0.05
Kilowatts Required						1.0		1.9		2.4		2.8		3.3		3.7	

Volumetric Rate based on 100% Volumetric Efficiency. Brake Horsepower/Kilowatts Required is based on 90% mechanical Efficiency.

Volumetric Rate is based on 100% Volumetric Efficiency. Brake Horsepower/Kilowatts Required is based on 90% Mechanical Efficiency. For Operation below 100 RPM, an auxiliary lubrication system is required. Not all plunger sizes are shown. Contact National Oilwell Varco for additional information.

The information and data on this sheet is accurate to the best of our knowledge and belief but are intended for general information only. Applications suggested for the materials are described only to help readers make their own evaluations and decisions and are neither guarantees nor to be construed as express or implied warranties of suitability for these or other applications. National Oilwell Varco makes no warranty either express or implied beyond that stipulated in National Oilwell Varco Standard Terms and Conditions of Sale.

www.nov.com

Authorized Distributor:



6750 S 57th W Ave

Tulsa, OK 74131

Phone: 918-447-4600

MX-3 Cast Fluid End Simplex Plunger Pump

SPECIFICATIONS:

Max. Plunger Size, in. (mm):
1.625 (41.3)

Stroke Length, in. (mm):
2.250 (57.2)

Rated BHP at 400 rpm (kW):
5.0 (3.7)

Rated plunger load, pounds (N):
2,000 (8,896)

Maximum discharge working pressure, psi (kPa):
• "MC" model: 2,012 (13,872)

Crankshaft extension, in.(mm):
Diameter: 1.875 (47.6)
Length: 2.872 (73.0)
Key (width x depth): 1/2 X 1/2 (12.7 X 12.7)

Oil Capacity, gallons (L):
Crankcase: 0.5 (1.7)

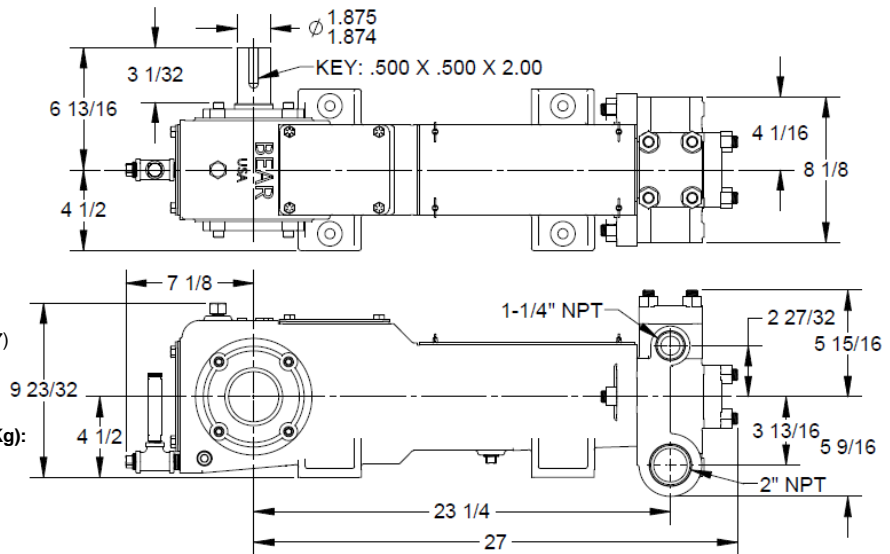
Weight, pump w/ wood skids pounds (Kg):
• "MC": 247 (116)

Standard Materials Fluid End:

- Alloy Steel
- Super Duplex Stainless Steel

Crankshaft Options:

- Right Hand Drive
- Left Hand Drive
- Right Hand Drive w/ Aux
- Left Hand Drive w/ Aux



MX-3 Cast Fluid End Simplex Plunger Pump

Performance Data:

Pump	English Units					100 RPM		200 RPM		250 RPM		300 RPM		350 RPM		400 RPM	
	Plunger Dia. In.	Plunger Area Sq. In.	BPD per RPM	GPM per RPM	Max Press. PSI	BPD	GPM	BPD	GPM	BPD	GPM	BPD	GPM	BPD	GPM	BPD	GPM
MX-3MC (1-1/2")	1.625	2.0739	0.6926	0.0202	964	69.3	2.02	138.5	4.04	173.1	5.05	207.8	6.06	242.4	7.07	277.0	8.08
	1.500	1.7671	0.5901	0.0172	1,132	59.0	1.72	118.0	3.44	147.5	4.30	177.0	5.16	206.5	6.02	236.1	6.88
	1.375	1.4849	0.4959	0.0145	1,347	49.6	1.45	99.2	2.89	124.0	3.62	148.8	4.34	173.6	5.06	198.4	5.79
	1.250	1.2272	0.4098	0.0120	1,630	41.0	1.20	82.0	2.39	102.5	2.99	122.9	3.59	143.4	4.18	163.9	4.78
	1.125	0.9940	0.3320	0.0097	2,012	33.2	0.97	66.4	1.94	83.0	2.42	99.6	2.90	116.2	3.39	132.8	3.87
Brake Horsepower Required						1.3		2.5		3.2		3.8		4.4		5.0	

Pump	Metric Units					100 RPM		200 RPM		250 RPM		300 RPM		350 RPM		400 RPM	
	Plunger Dia. cm	Plunger Area cm ²	M ³ /Hr per RPM	L/Sec. Per RPM	Max Press. kPa	M ³ /Hr.	L/Sec.	M ³ /Hr.	L/Sec.	M ³ /Hr.	L/Sec.	M ³ /Hr.	L/Sec.	M ³ /Hr.	L/Sec.	M ³ /Hr.	L/Sec.
MX-3MC (1-1/2")	41	13.3802	0.0046	0.0013	6,649	0.46	0.13	0.91	0.25	1.14	0.32	1.37	0.38	1.60	0.45	1.83	0.51
	38	11.4009	0.0039	0.0011	7,803	0.39	0.11	0.78	0.22	0.97	0.27	1.17	0.33	1.36	0.38	1.56	0.43
	35	9.5799	0.0033	0.0009	9,287	0.33	0.09	0.65	0.18	0.82	0.23	0.98	0.27	1.15	0.32	1.31	0.36
	32	7.9173	0.0027	0.0008	11,237	0.27	0.08	0.54	0.15	0.68	0.19	0.81	0.23	0.95	0.26	1.08	0.30
	29	6.4130	0.0022	0.0006	13,872	0.22	0.06	0.44	0.12	0.55	0.15	0.66	0.18	0.77	0.21	0.88	0.24
Kilowatts Required						1.0		1.9		2.4		2.8		3.3		3.7	

Volumetric Rate based on 100% Volumetric Efficiency. Brake Horsepower/Kilowatts Required is based on 90% mechanical Efficiency.

Volumetric Rate is based on 100% Volumetric Efficiency. Brake Horsepower/Kilowatts Required is based on 90% Mechanical Efficiency. For Operation below 100 RPM, an auxiliary lubrication system is required. Not all plunger sizes are shown. Contact National Oilwell Varco for additional information.

The information and data on this sheet is accurate to the best of our knowledge and belief but are intended for general information only. Applications suggested for the materials are described only to help readers make their own evaluations and decisions and are neither guarantees nor to be construed as express or implied warranties of suitability for these or other applications. National Oilwell Varco makes no warranty either express or implied beyond that stipulated in National Oilwell Varco Standard Terms and Conditions of Sale.

www.nov.com

Authorized Distributor:



6750 S 57th W Ave

Tulsa, OK 74131

Phone: 918-447-4600